



SUMMITBAY
CONSTRUCTION, INC.

The Jeanne Marie

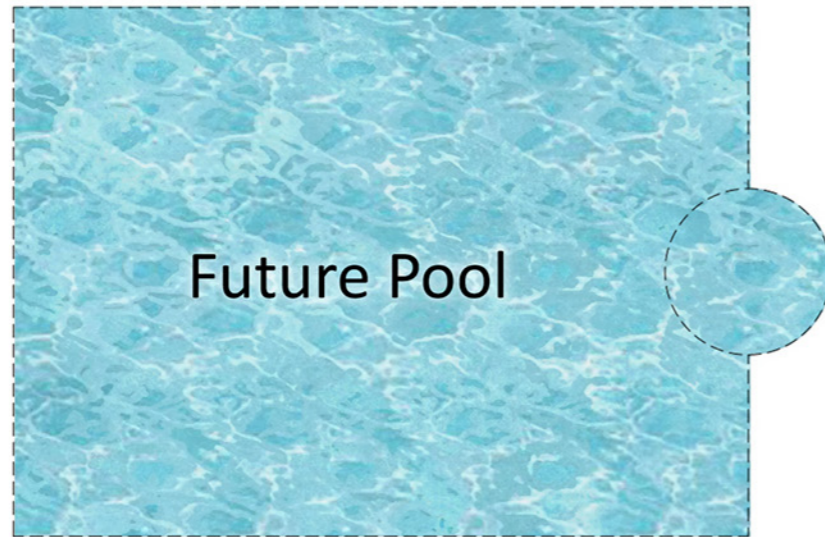


To learn more about this new home build please contact us at 813-527-9900 or info@SummitBay.com

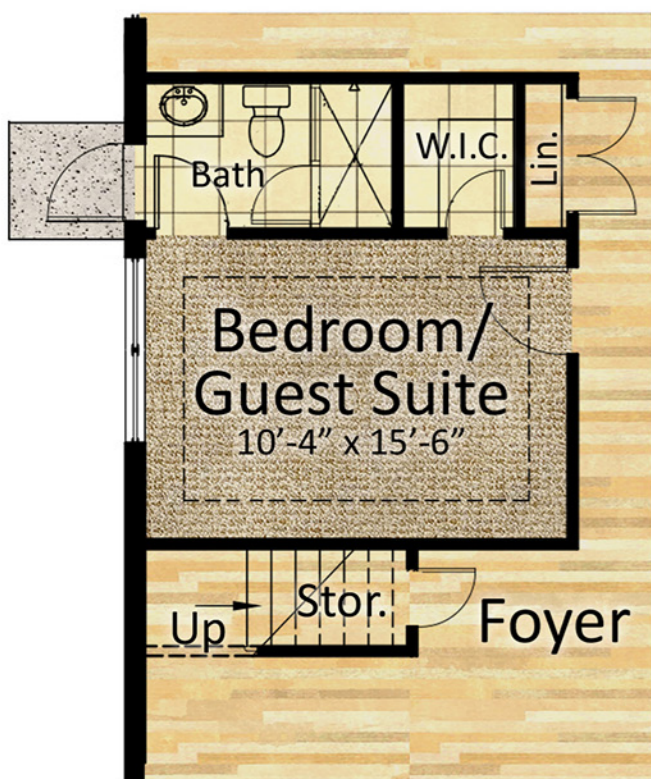


SUMMITBAY
CONSTRUCTION, INC.

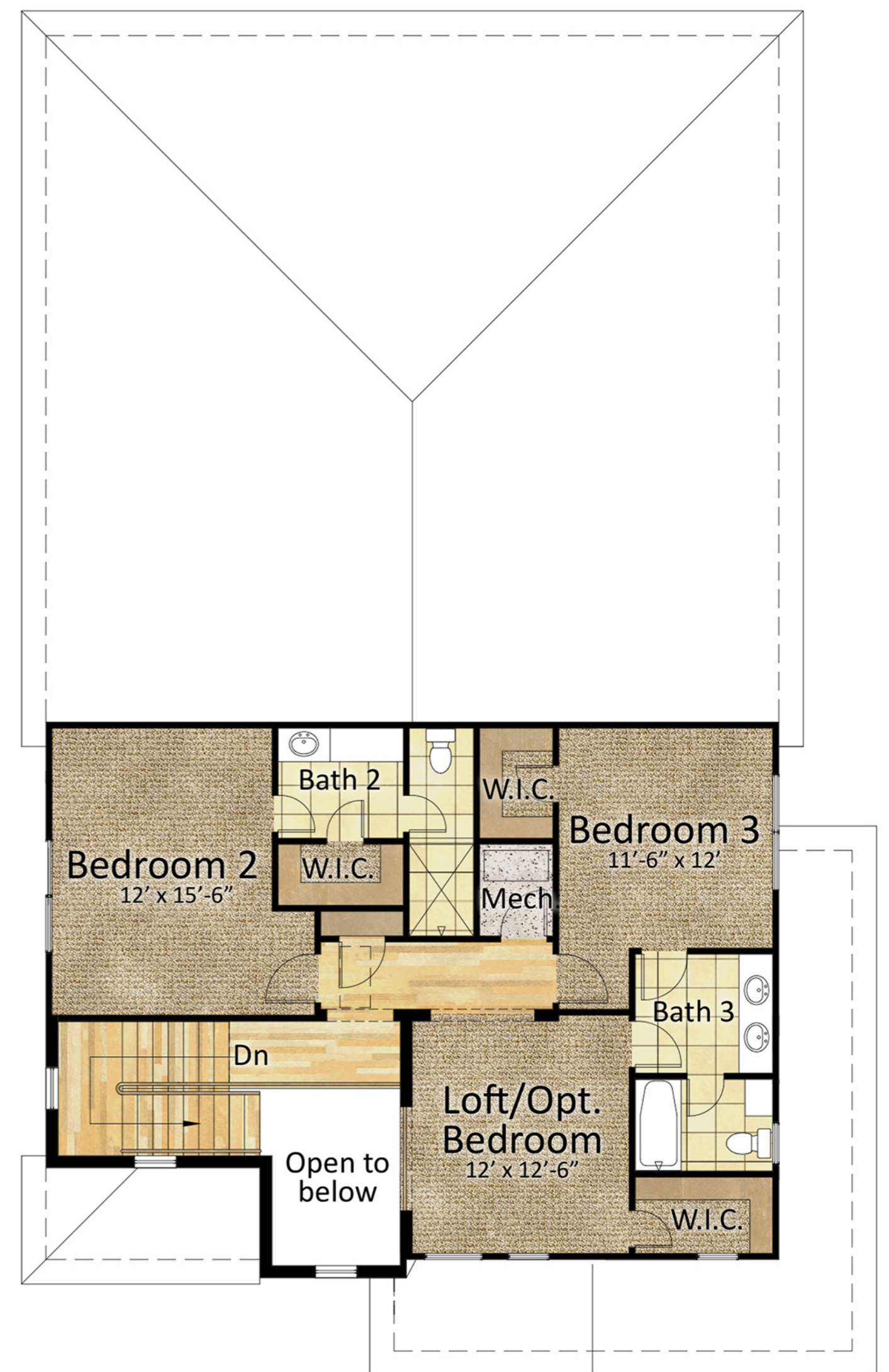
The Jeanne Marie



Main Level Floor Plan



Opt. Guest Suite



Upper Level Floor Plan

To learn more about this new home build please contact us at 813-527-9900 or info@SummitBay.com



SUMMITBAY
CONSTRUCTION, INC.

The Jeanne Marie

Square Footage

Lot Size: 8,100 sf (60'x135')
Living (1st Floor): 1,951 sf
Living (2nd Floor): 959 sf
Total Living A/C: 2,910 sf
Covered Outdoor Dining: 237 sf
Entry Porch: 58 sf
2.5 Car Garage: 655 sf
Total Gross Sq. Footage: 3,860 sf

Address

3305 W Paul Ave
Tampa, Florida 33611

Features

- 5 Bedroom; 4.5 Bath; 2 1/2 Car Garage
- Master Bedroom and Guest Suite on 1st Floor
- Grand Foyer
- Spacious Kitchen with Oversized Island and Dry Bar Beverage Area
- Slider Doors in Great Room open to immense Covered Outdoor Kitchen and Dining Area
- Prepped for Future Pool
- Pre wired for Audio, Smart Home controls, cameras, and security system

To learn more about this new home build please contact us at 813-527-9900 or info@SummitBay.com